

# LPR Software

LIVESTOCK POCKET READER

# USER GUIDE

Rev 1.0



# Table of contents

1. Getting started .....	3
Features .....	3
System requirements .....	3
Program installation .....	3
2. First use .....	6
3. Memory .....	7
Enable memory feature .....	7
Download memory.....	7
4. Bluetooth® connection .....	8
Pairing from LPR Software .....	8
Pairing from Windows control panel.....	9
Connect by Bluetooth when the reader is already paired .....	11
5. Updates .....	12
Software updates.....	12
Firmware updates .....	12
6. Advanced operations.....	14
Change reader settings.....	14
Use virtual keyboard .....	15
Configure a Bluetooth® connection .....	16
7. Appendix.....	18
.NET Framework 3.5 installation .....	18
8. Trademarks.....	20

# 1. Getting started

## Features

LPR Software is the perfect tool to make use of your reader. It offers the following capabilities:

- Change reader settings
- Configure a Bluetooth® connection with a remote device
- Download reader memory and export animal ID's to Excel
- Use your reader as a virtual keyboard
- Update your reader firmware

## System requirements

- Microsoft® Windows® 2000 Service Pack 4, Windows XP, Windows Vista, Windows 7, Windows 8, Windows 8.1 (This software is not compatible with Mac OS)
- Personal computer with:
  - ▶ 512 MB of RAM minimum
  - ▶ 40 MB free hard disk space

### NOTE:

LPR Software requires .NET Framework 3.5 which is usually installed with Windows operating system. If it is not installed on your computer, the installation program will prompt you to install it (Refer to Appendix to see how to install .NET framework).

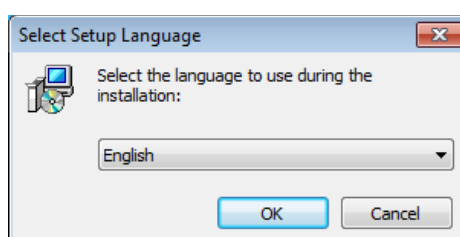
## Program installation

This paragraph will guide you through the installation process on your computer.

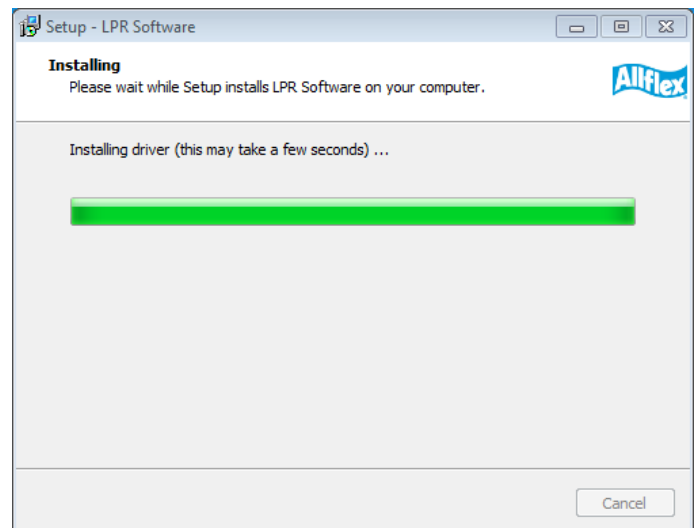
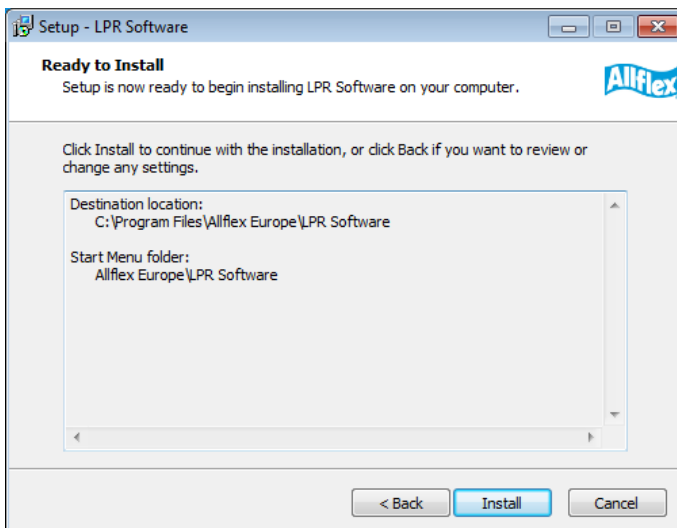
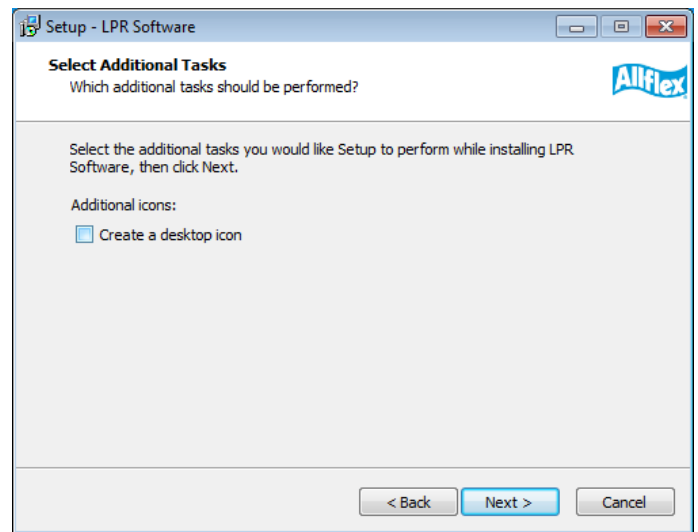
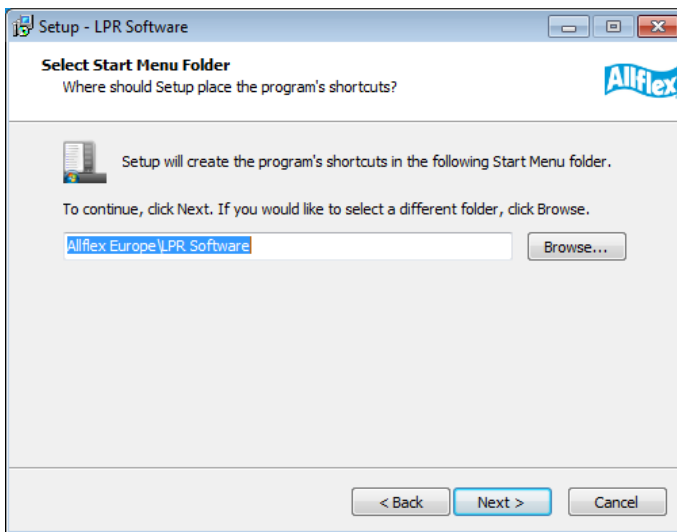
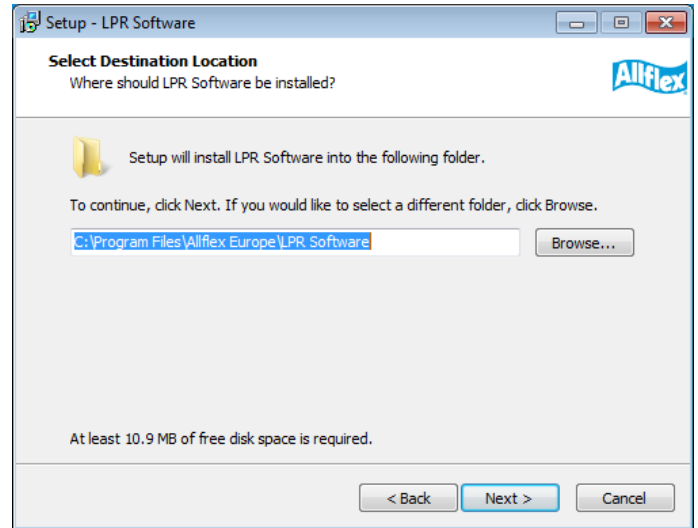
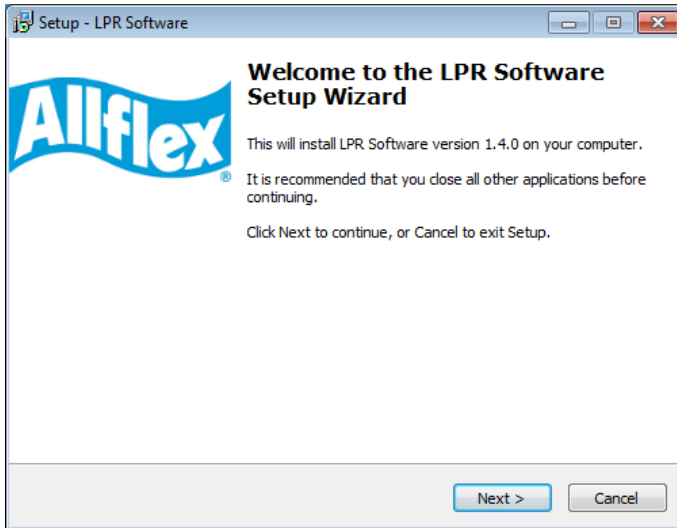
### NOTE:

During the program installation, the USB drivers necessary to connect the reader will be installed.

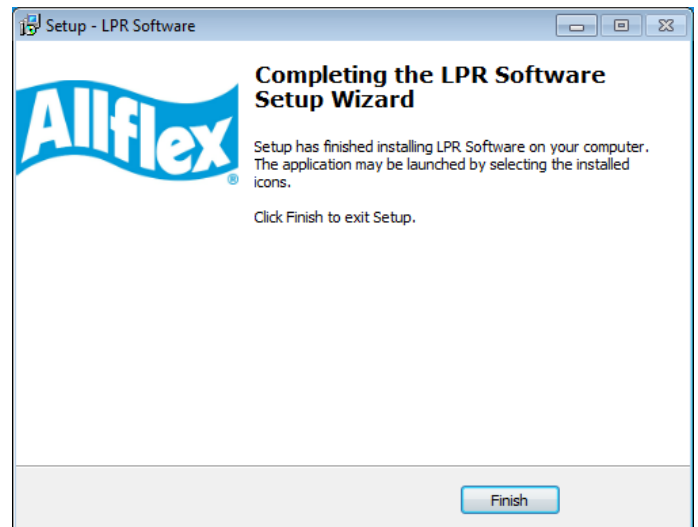
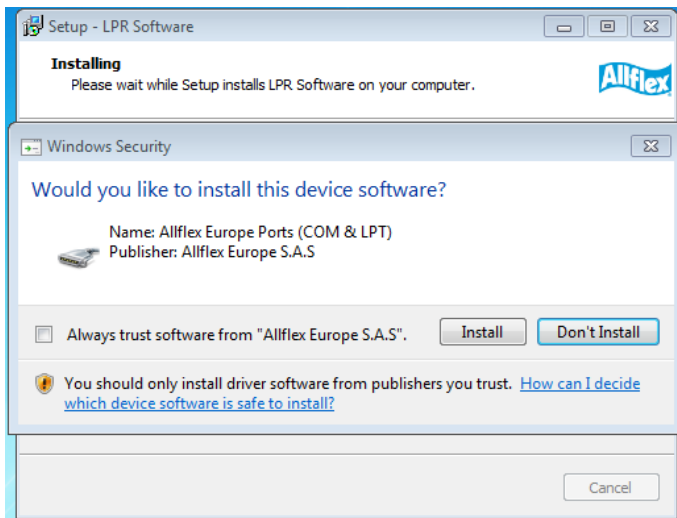
1. Double-click on the setup package to start the installation and choose the appropriate language.



## 2. Then, follow the different steps

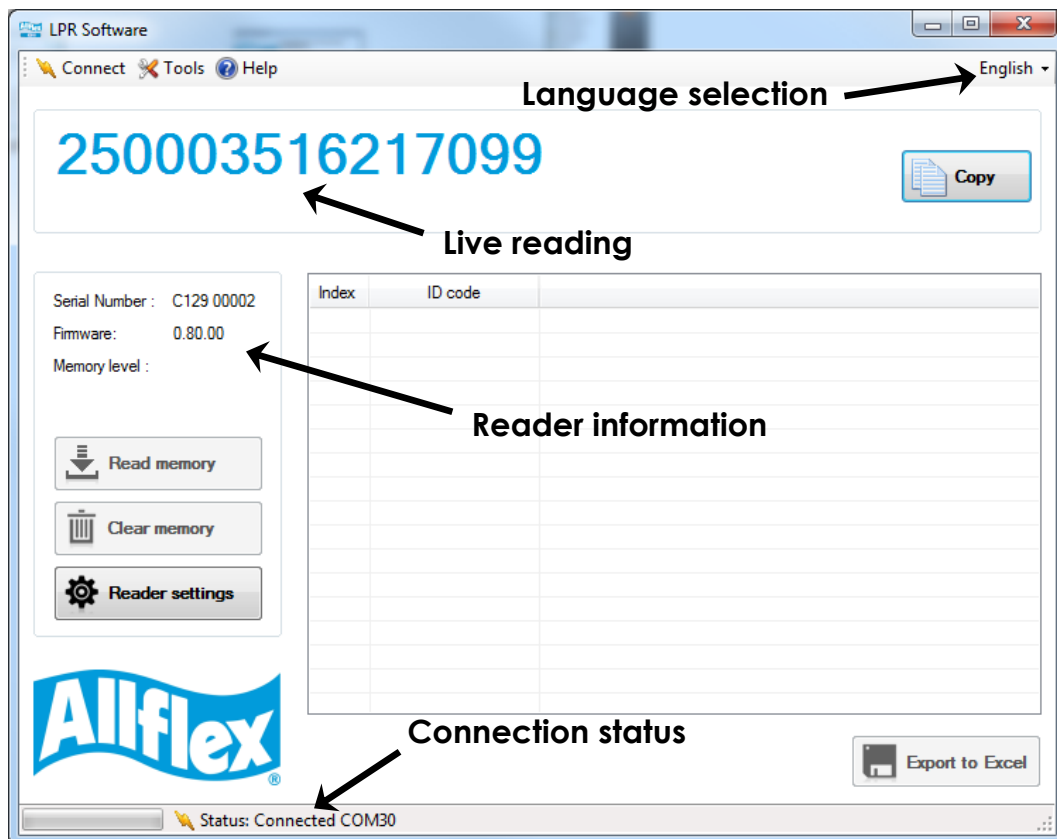


3. During the installation, it will install the USB drivers necessary to connect the reader through USB. Check "Always trust software..." and click on Install button. Click on Finish at the end of the process to close the installation.



## 2. First use

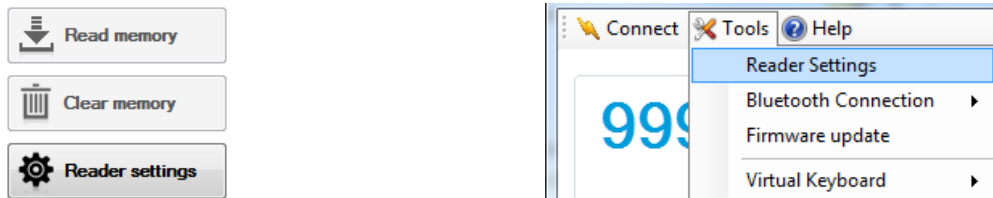
1. Connect your reader with the USB cable.
2. The first time you connect your reader on a USB port, Windows will install the reader using the drivers previously installed. Once this operation is finished, you can start LPR Software.



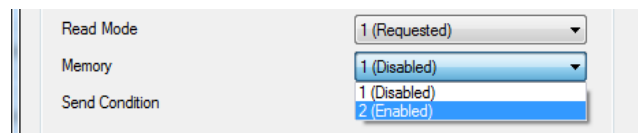
# 3. Memory

## Enable memory feature

1. To enable memory feature, go into the reader settings panel by clicking on the “Reader settings” button or using the top menu as following:



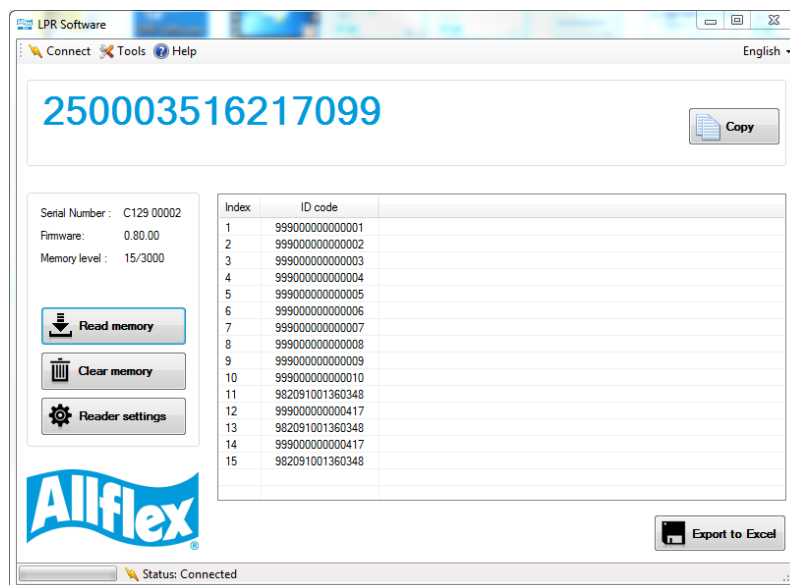
2. In the reader setting panel, locate “Memory” and choose “Enabled” option



## Download memory

When memory feature is enabled, you can download the animal identification codes stored in the reader.

1. Click on “Read Memory” button to download the memory from the reader.
2. Export the ID code list to Excel by clicking on “Export to Excel” button.
3. Once finished, you can click on “Clear memory” to erase animal identification codes stored in the reader.



# 4. Bluetooth® connection

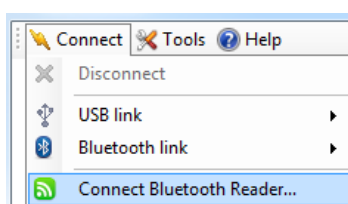
## Pairing from LPR Software

LPR Software is able to search for Bluetooth devices in the vicinity and pair to one of them. Here, the target is to find your reader in order to connect it to your computer by Bluetooth.

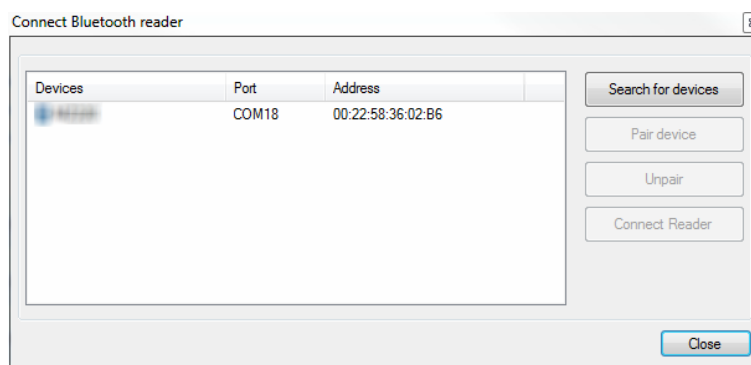
**NOTE:**

Before continuing, make sure the Bluetooth is enabled on your reader.

1. Click on “Connect” menu and select “Connect Bluetooth Reader...”

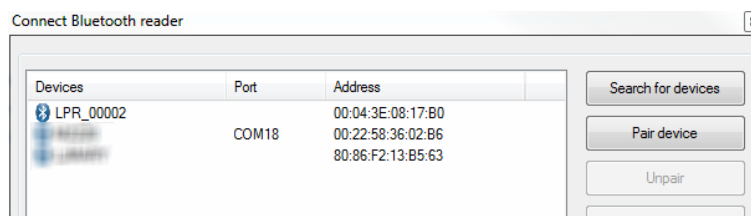


2. Power-on your reader and click on “Search for devices”



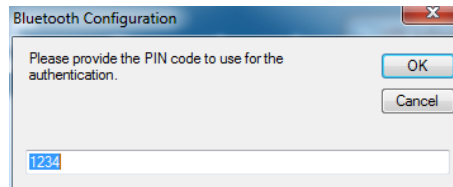
3. Your reader should appear in the list. Click on “Pair device” to start the pairing with the reader.

Make sure your reader is still on.

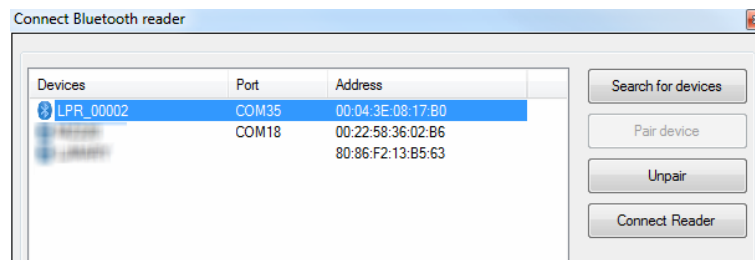




- By default, the pairing code is 1234. Click OK to continue the pairing. At this moment, Windows will install the driver to create a virtual COM port.

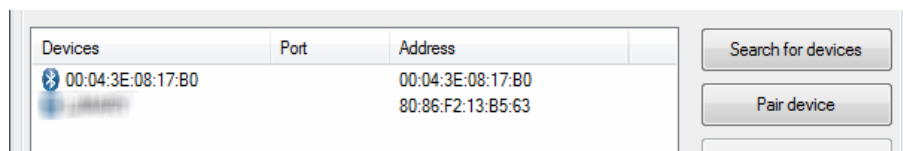


- Once Windows installed the driver, the COM port number appears in the Port column. You can now click on "Connect Reader" button to connect your reader using Bluetooth.



**NOTE:**

If the reader name is not displayed as shown in the following picture, you can search for devices again and this should display the name.

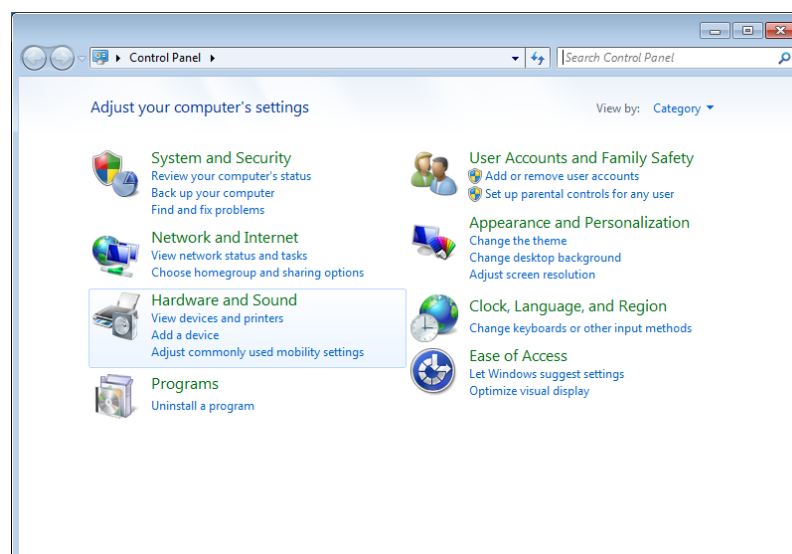


## Pairing from Windows control panel

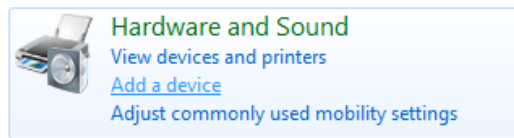
Alternately, you can pair the reader using Windows Control Panel.

Find below the instructions for pairing with Windows 7:

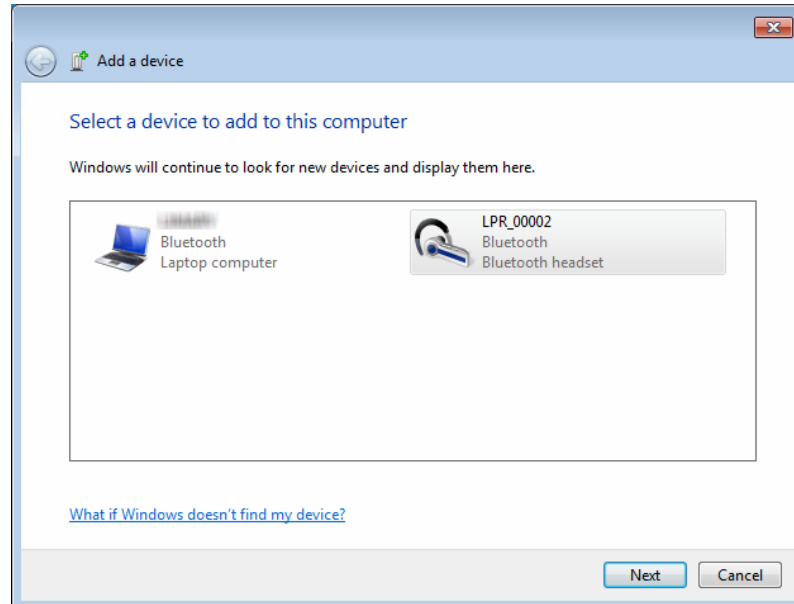
- Open Windows' Control Panel



2. In “Hardware and Sound” section, select “Add a device”



3. Switch-on the reader and wait until the reader appears in the device list as following:

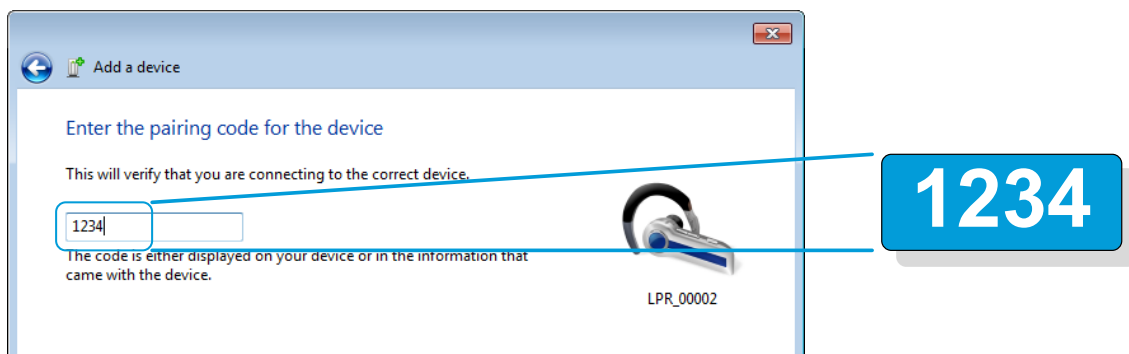


4. Select the appropriate reader and click with right button.

**NOTE:**

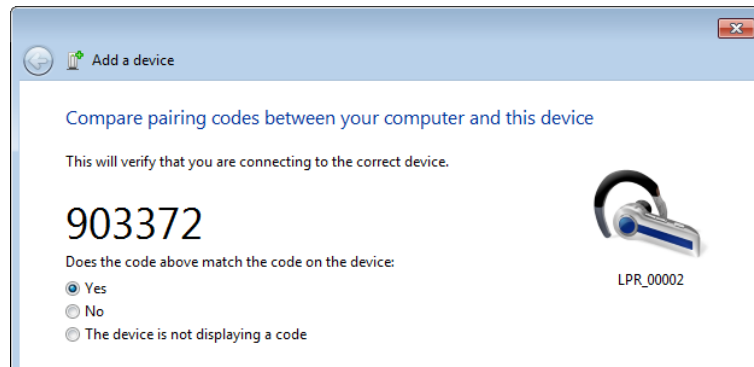
Your reader may appear as a Bluetooth headset.

5. Type the PIN code and click Next

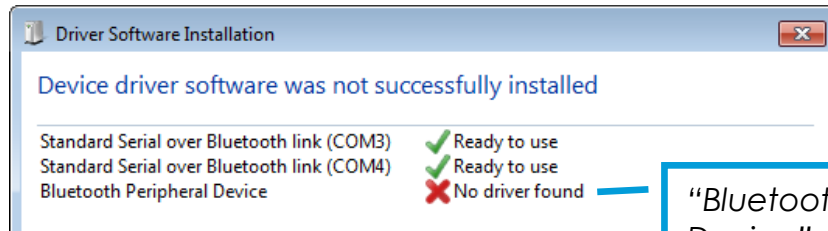


**NOTE:**

If the reader is configured with Bluetooth Authentication option enabled, the pairing process is based on a code generated automatically. In this case, click next to continue (the code will not appear on the reader)



6. Windows will now install the driver needed as following:

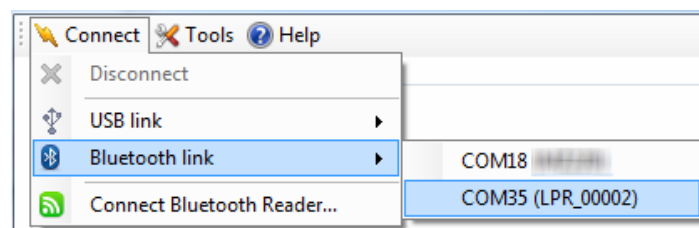


*“Bluetooth Peripheral Device” is a service dedicated to Apple’s devices and is unknown from Windows’ operating system. That is the reason why the PC mentions “no driver*

7. Your reader is now ready to connect.

## Connect by Bluetooth when the reader is already paired

When your reader has already been paired to your computer, you just need to go in “Connect menu”, select “Bluetooth link” and click on the appropriate COM port.

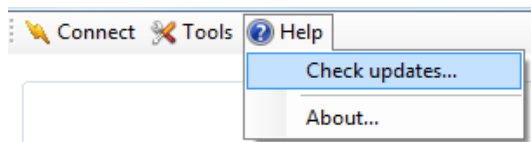


# 5. Updates

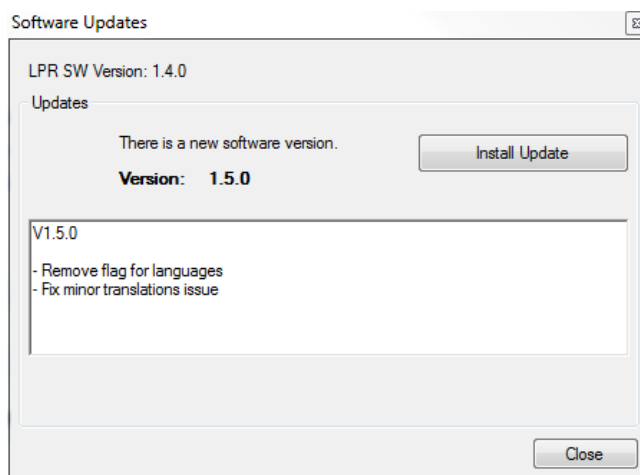
LPR Software has the capability to check for online updates. It can update the PC software and the reader firmware.

## Software updates

1. Go into “Help” menu and click on “Check updates...”



2. If an update is available, you will see the list of changes and you can install the update by clicking on “Install Update”.



3. The new software will then be downloaded and the installation program will start automatically.

## Firmware updates

### NOTE:

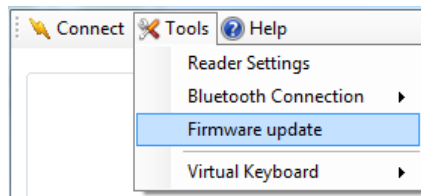
A firmware update can only be done with the USB cable.

DO NOT UNPLUG THE USB CABLE DURING THE FIRMWARE UPDATE.

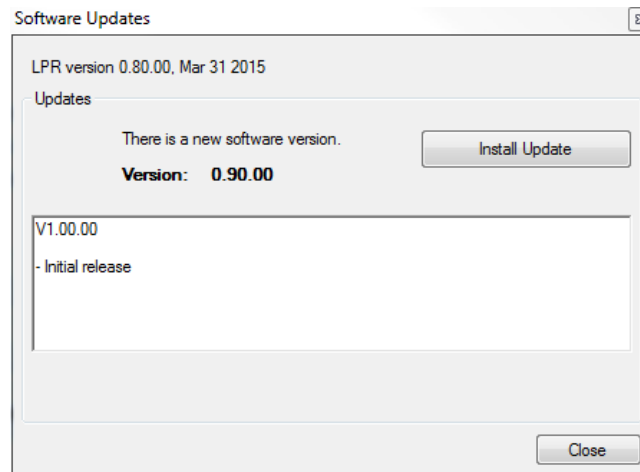
### NOTE:

Don't close the software or shut-down your computer during the firmware update.

1. Go into “Tools” menu and click on “Firmware update.”



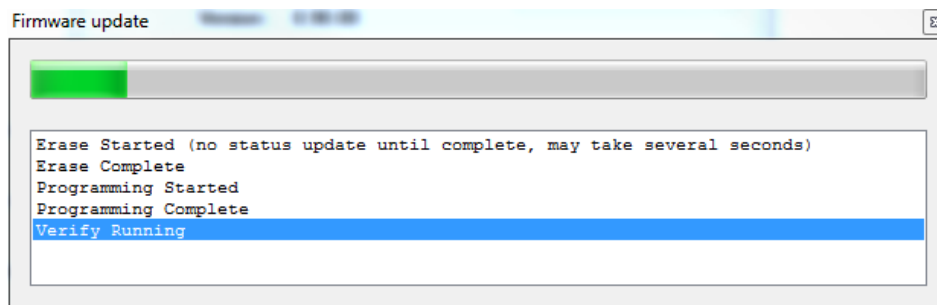
2. If a firmware update is available, you should see the list of changes and you can click on Install Update



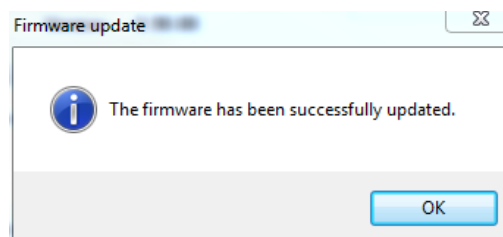
3. Once the firmware is downloaded, the update will not start immediately. You should see the following message:

**Preparing for update...**

4. After a few seconds, the firmware update will start and this windows will open showing the progress of the task



5. Once finished, the following message appears and the reader reboots automatically.



# 6. Advanced operations

## Change reader settings

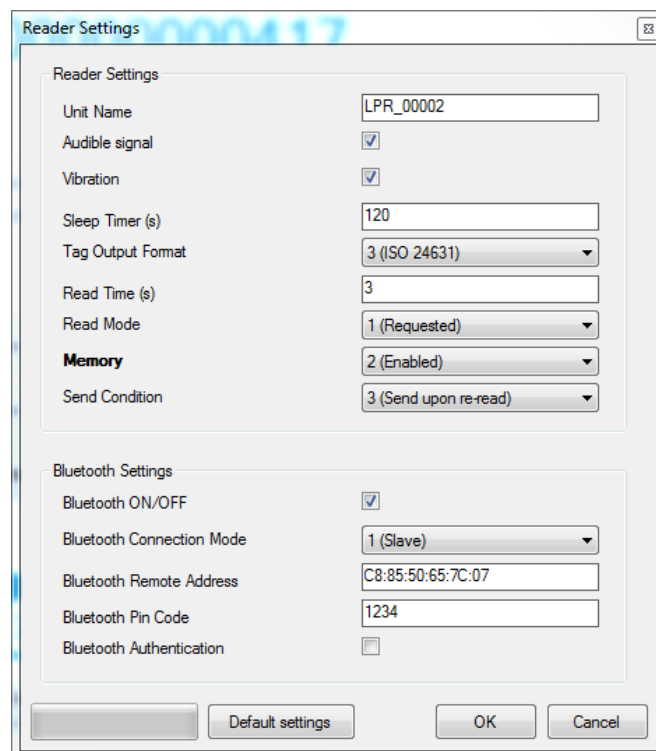
You can access the reader settings panel by clicking on the reader settings button or by the top menu:



The reader settings panel allows changing basic and advanced settings like:

- Unit ID
- Memory activation
- Advanced Bluetooth settings
- Tag output format
- ...

Once finished, click “OK” to validate and apply the changes or “Cancel” to leave the configuration unchanged.



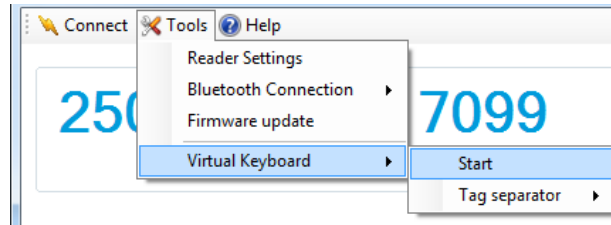
### NOTE:

You can reload the default settings by clicking on “Default settings” button.

# Use virtual keyboard

With virtual keyboard feature, you can put the animal number captured with your reader directly in your own software or web-based application. That means LPR Software will receive the number coming from your reader and put it where your cursor is.

1. To start the virtual keyboard feature, click on “Tools” button on the top menu, select Virtual Keyboard and click Start.



2. After clicking on “Start” button, the application will automatically minimize in the Windows task bar.
3. Give the focus to the target application and click where you want the microchip number to go.
4. Read an animal tag with your reader. Example with Excel:

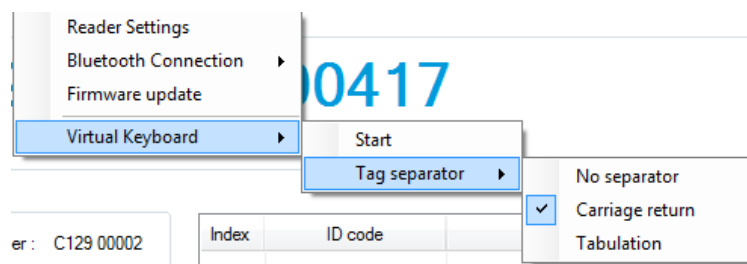
	A	B	
1			
2	250003516217099		
3	999000000000417		
4			
5			

## NOTE:

Once the virtual keyboard feature is enabled, it will remain active until the focus is back on LPR Software. By default the separator between two identification codes is a carriage return.

The separator can be changed to:

- No separator
- Carriage return
- Tabulation



## NOTE:

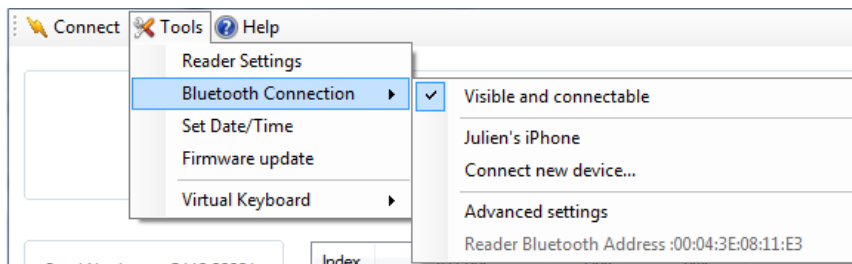
If you are using a web-based application, the carriage return may invoke a validation action. In such case, tabulation or no separator can be chosen.

## Configure a Bluetooth® connection

By default, the Bluetooth module of your reader is configured to visible and connectable, meaning the remote device (smartphone, computer...) is in charge of establishing the Bluetooth connection.

This paragraph aims to explain how to configure a Bluetooth connection when your reader needs to behave as the master device.

Open the Tools menu and go into “Bluetooth Connection” section to see the different options:

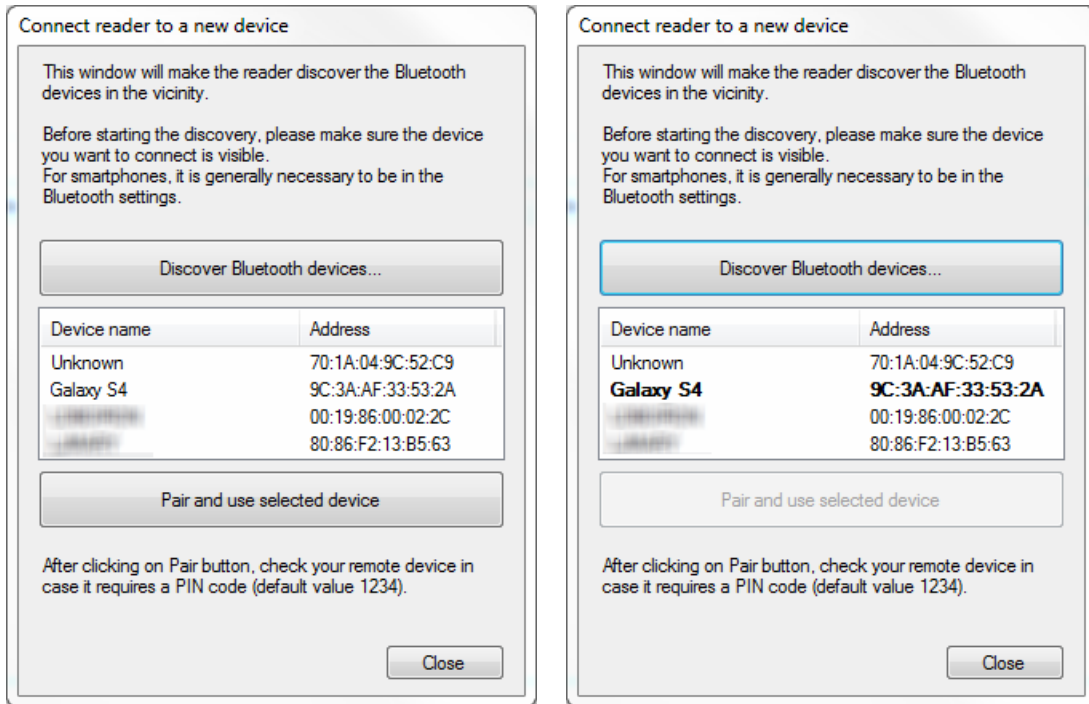


- Visible and connectable
  - ▶ Default mode: reader is visible from other devices like smartphones and computers and can be connected.
- Connect new device...
  - ▶ This menu allows you to make the reader search for other devices in the vicinity of your reader. After selecting the desired device, your reader will operate as a master device and will try to connect to the paired device repeatedly.
- Advanced settings
  - ▶ Open the reader settings panel to change individually each Bluetooth parameter
- Reader Bluetooth Address: 00:04:3E:08:17:B0
  - ▶ This address may be necessary to configure a Bluetooth connection with another device.

To configure a Bluetooth connection in Master mode using “Connect new device...” menu, follow these instructions:



1. Make sure the device you want to connect is visible and connectable. With smartphones, it is generally necessary to go into Bluetooth settings.
2. Click on “Discover Bluetooth devices...”



3. Select the device you want to connect to and click on “Pair and use selected device”.

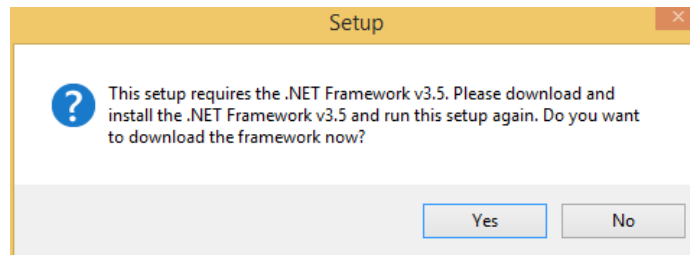
The device will become bold and you can close the window.

# 7. Appendix

## .NET Framework 3.5 installation

LPR Software requires .NET Framework 3.5 to be installed on the machine.

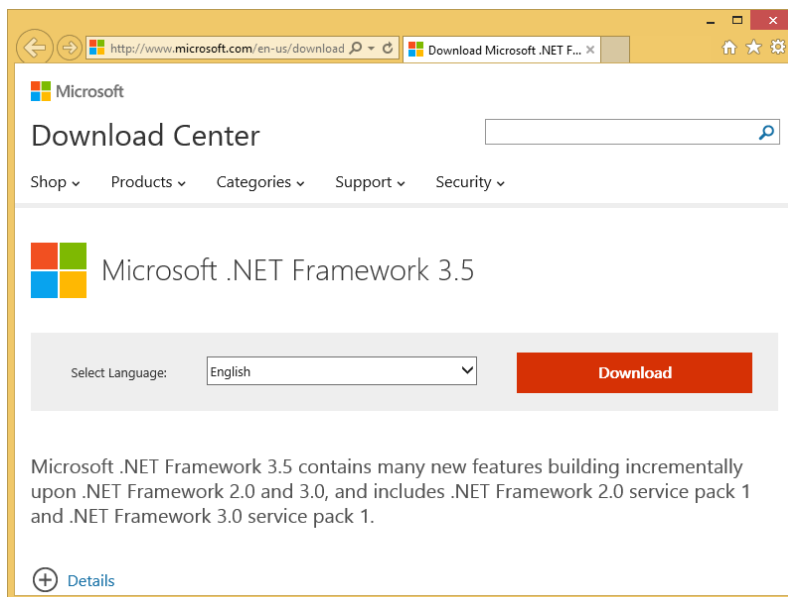
If you have the following message when you run the setup package, click “Yes” and follow the .NET Framework 3.5 installation instructions.



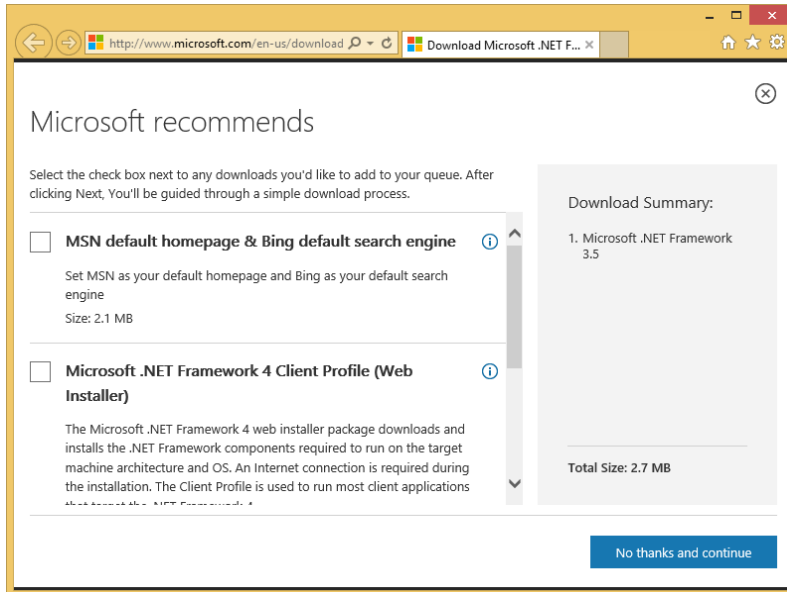
### NOTE:

The .NET Framework installation requires an internet connection.

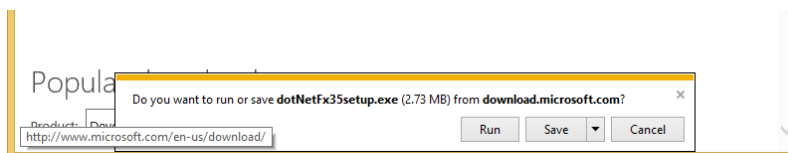
1. After clicking on “Yes”, your internet browser will be opened with the following page. Click on “Download” button to continue.



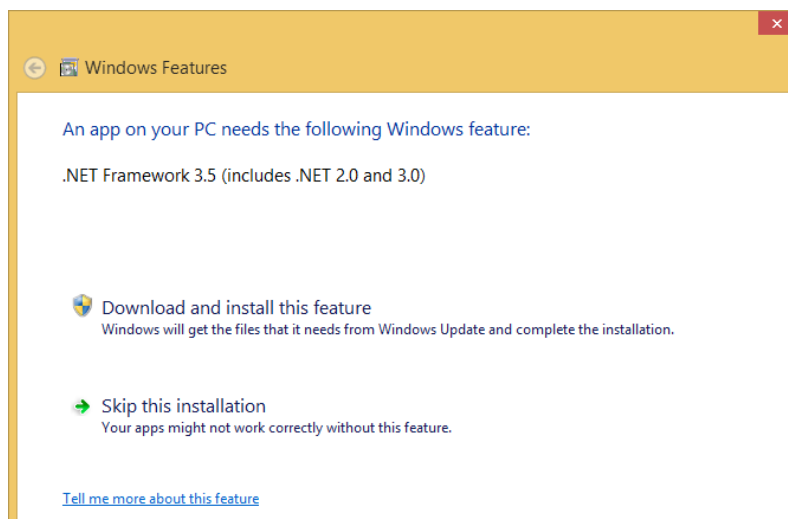
2. On the following page, uncheck unnecessary downloads (Download summary should only contain Microsoft .NET Framework 3.5) and click on “No thanks and continue”.



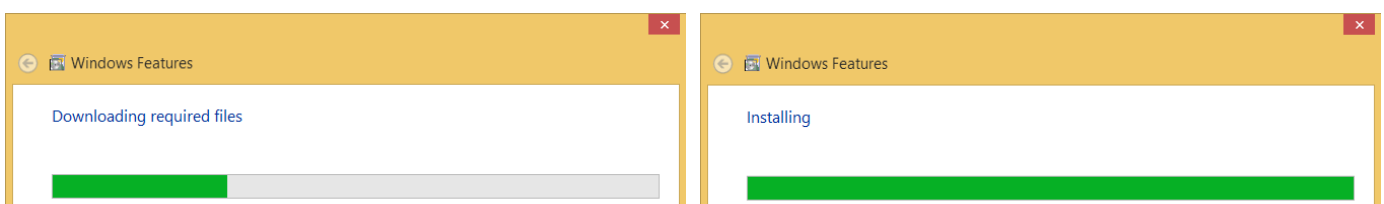
3. Click Run on the bottom of the page to start .NET Framework installation.



4. Then, click on “Download and install this feature”.



5. At this step, the .NET Framework 3.5 installation program will download the required files from internet and then install the framework:



6. Once finished, click on Close button.

# 8. Trademarks

Bluetooth® is a registered trademark of Bluetooth SIG, Inc.

Windows is a trademark or registered trademark of Microsoft Corporation in the United States and/or other countries.